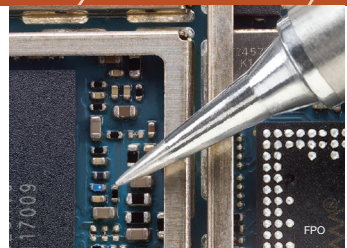


The ADS200

AccuDrive™ Production
Soldering Station



Solutions and systems for soldering, rework and repair of electronics

PAGE®
paceworldwide.com



Introducing the ADS200 Production Soldering Station

Standard or Optional ISB Tool Stand

Instant SetBack (ISB) automatically lowers temperature when iron is in the Stand to extend tip life and save energy.

Wide-Angled Design

Allows easy insertion and removal of the TD-200 Iron, yet holds it securely.

Wet & Dry Cleaners

The Tool Stand incorporates a sponge and non-abrasive brass wool.

Temperature Presets

Easily scroll between 3 user-definable, preset temperatures.

Digital LED Display

Viewable at all angles.

Simple Operation

Power on, set the temperature with the arrow keys and start soldering.



ESD-Safe*

Meets ANSI/ESD S13.1-2015 and 20.20 specifications.

Rugged, All Aluminium Construction

The Housing, Tool Stand and TD-200 Iron endure extreme, multi-shift production use.

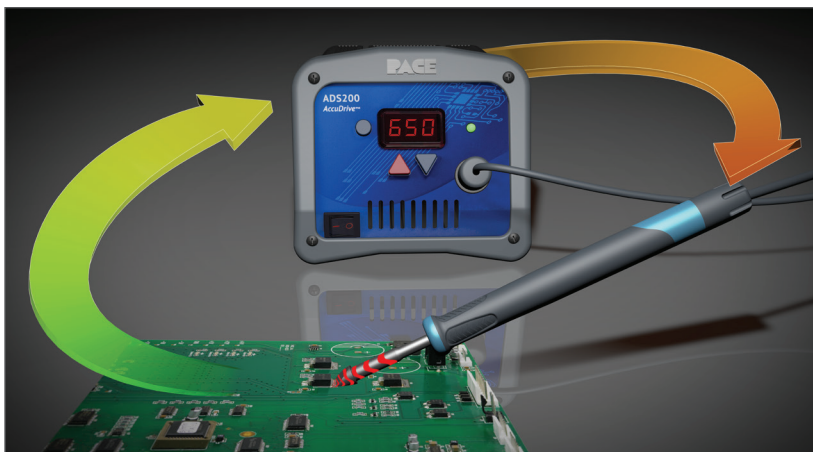
No Calibration Required

AccuDrive™ absolute temperature accuracy eliminates the need for routine, costly calibration.

* ANSI/ESD S13.1-2015 provides test methods for measuring current leakage, tip-to-ground reference point resistance, and tip voltage for soldering equipment. Unlike Curie point/RF induction-based soldering systems, the ADS200 passes the peak voltage test with flying colors!

Driven by new AccuDrive™ Control Technology

Accurate tip temperatures with maximum heat delivery!



AccuDrive™ continuously monitors tip temperature, providing instantaneous load sensing and on-demand power to quickly reflow solder joints at low, safe temperatures, without the need to calibrate.

How It Works

At the heart of the ADS200 lies PACE's new AccuDrive™ Technology. AccuDrive™ allows you to set honest, highly-accurate temperatures, *without* the need to change cartridges or calibrate. Its advanced electronics provide instantaneous load sensing and on-demand power to quickly reflow solder joints at safe, low temperatures, regardless of the mass of the application.

Unbeatable Results

AccuDrive™ delivers consistent, repeatable results in both light and heavy-use environments and provides the operator with the flexibility that is essential in today's demanding production operations. Regardless of your application, AccuDrive™ delivers unsurpassed thermal performance, productivity and bottom-line cost savings!

TD-200 AccuDrive™ Tip-Heater Cartridge Iron

Beneath its sleek dimensions, comfortable ergonomics and cool touch, the TD-200 makes continuous production soldering effortless!

AccuDrive™ Tip-Heater Cartridges

Provide accurate tip temperatures, instant heat-up/recovery, and high-capacity heating—all at safe, low temperatures.

Cool Touch™ Grip

Aluminum handle stays cool and comfortable even during extended production use.

Versatile & Flexible

Works safely on 0201's, sensitive flex circuits or the highest mass, lead-free PCBs.

Burn-Resistant Cord

ESD-safe cord is soft and flexible, withstanding direct contact with hot tips.

Ultra-Short Tip-to-Grip

Under 1.9"/48mm for precision operator dexterity when used under a magnifier or microscope.

Comfortable & Ergonomic

Slim & lightweight, dramatically reduces grip stress and operator fatigue, enhancing productivity.

ESD-Safe Design

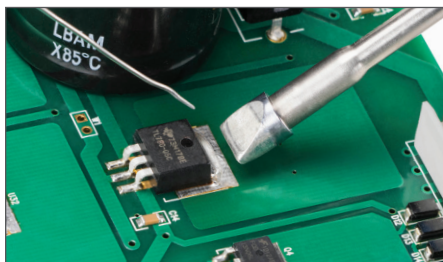
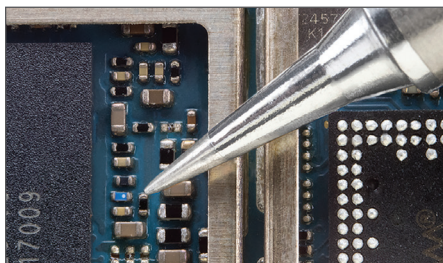
From tip to the end of the cord, the TD-200 protects your ESD-sensitive devices.



Stays Cool All Day

AccuDrive™ Blue Series Tip-Heater Cartridges

New PACE AccuDrive™ technology combines a high-accuracy sensor and powerful heat generation in one low-cost tip cartridge!



Solder the most delicate 0201 components, or highest mass components & PCBs.

Inexpensive Cartridges:

Less than half the price of most cartridge style or curie point tips, delivers lowest cost of ownership.

One Tip Geometry, Any Temperature:

Unlike with curie point tips, select any temperature for a chosen tip cartridge without having to buy additional ones.

Accurate, Honest Temperatures:

Consistent, accurate tip temperatures meet or exceed J-STD-001 requirements.

High Capacity Integrated Heater:

Delivers up to 120 Watts of *pure power*.

Superior Heat Transfer/Delivery:

Allows for safer, lower temperatures, reduces risk of PCB damage and improves tip life.

Hot-Swappable Quick-Change Tips:

Fast & easy change-out within 2 seconds, without turning the unit off.

Fast Initial Heat-Up:

Achieves set temperature in seconds.

Wide Variety of Tip Geometries Available:

For the most delicate micro-soldering to challenging, high thermal mass applications.

AccuDrive™ Blue Series Tip-Heater Cartridges



Standard Tips*

For delicate micro-soldering to challenging, high thermal mass applications

Tip	Description	Part Number
	1/32" Conical Sharp Extended (0.80mm)	P/N 1130-0001-P1
	1/64" Conical Sharp (0.40mm)	P/N 1130-0002-P1
	1/64" Conical Sharp Bent 30° (0.40mm)	P/N 1130-0003-P1
	1/64" Conical Sharp Extended (0.40mm)	P/N 1130-0004-P1
	3/64" 30° Chisel (1.20mm)	P/N 1130-0008-P1
	13/64" Extra Large Chisel (5.15mm)	P/N 1130-0010-P1
	1/64" 60° Bevel (0.40mm)	P/N 1130-0011-P1
	1/32" 30° Chisel (0.80mm)	P/N 1130-0012-P1
	3/32" 30° Chisel (2.38mm)	P/N 1130-0013-P1
	3/64" 30° Bent Chisel (1.20mm)	P/N 1130-0016-P1

Tip	Description	Part Number
	1/16" 30° Chisel (1.59mm)	P/N 1130-0019-P1
	1/8" 90° Chisel (3.18mm)	P/N 1130-0020-P1
	1/16" 30° Bent Chisel (1.59mm)	P/N 1130-0026-P1
	MiniWave® (3.05mm)	P/N 1130-0032-P1
	Angled MiniWave® (3.05mm)	P/N 1130-0033-P1
	Angled MiniWave® (2.11mm)	P/N 1130-0035-P1
	1/128" Conical (0.20mm)	P/N 1130-0036-P1
	1/4" Flat Blade (6.35mm)	P/N 1130-0037-P1
	1/128" Conical, Special (0.20mm)	P/N 1130-0050-P1
	1/8" 30° Chisel (3.18mm)	P/N 1130-0051-P1



Ultra-Performance Tips*

Optimized tip geometries and increased thermal pipeline deliver maximum heat throughput

Tip	Description	Part Number
	1/32" Conical Sharp Ext. (0.80mm)	P/N 1131-0001-P1
	1/64" Conical Sharp (0.40mm)	P/N 1131-0002-P1
	1/64" Conical Sharp Bent 30° (0.40mm)	P/N 1131-0003-P1
	3/64" 30° Chisel (1.20mm)	P/N 1131-0008-P1
	13/64" Chisel (5.15mm)	P/N 1131-0010-P1
	1/32" 30° Chisel (0.80mm)	P/N 1131-0012-P1
	3/32" 30° Chisel (2.38mm)	P/N 1131-0013-P1
	1/16" 30° Chisel (1.59mm)	P/N 1131-0019-P1
	MiniWave® (3.05mm)	P/N 1131-0032-P1
	1/4" Knife Blade (6.35mm)	P/N 1131-0037-P1

Tip	Description	Part Number
	1/8" 30° Chisel (3.18mm)	P/N 1131-0051-P1
	1/16" Chisel (1.59mm)	P/N 1131-0052-P1
	1/8" Chisel (3.18mm)	P/N 1131-0053-P1
	3/16" Chisel (4.78mm)	P/N 1131-0054-P1
	1/4" Chisel (6.35mm)	P/N 1131-0055-P1
	9/32" Chisel (7.14mm)	P/N 1131-0056-P1
	5/16" Chisel (7.95mm)	P/N 1131-0057-P1

* Other tips geometries available upon request. Contact support@paceworldwide.com for further information.

Advanced ADS200 Features & Options



Intuitive and Simple Operation



Stackable



Optional Instant SetBack (ISB) Tool Stand

Also Available from PACE



TF 1800 BGA/SMT Rework Station with Inductive-Convection Technology



IR 3000 Infrared BGA & SMT Rework Station



IR 1000 Low-Cost Infrared BGA & SMT Rework Station



ST 925 Low-Cost Convective and Infrared Station for SMT Rework



MBT 350 Multi-Channel Solder, Desolder & Rework System



ARM-EVAC 250 Microprocessor Controlled Fume Extractor



ADS200 Specifications

POWER REQUIREMENTS

P/N 8007-0578	120 VAC with Standard Tool Stand	120 Watts Maximum Output 97-127 VAC, 50/60 Hz
P/N 8007-0579	120 VAC with Instant SetBack Tool Stand	120 Watts Maximum Output 97-127 VAC, 50/60 Hz
P/N 8007-0580	230 VAC with Standard Tool Stand	120 Watts Maximum Output 197-253 VAC, 50/60 Hz
P/N 8007-0581	230 VAC with Instant SetBack Tool Stand	120 Watts Maximum Output 197-253 VAC, 50/60 Hz

SPECIFICATIONS

Dimensions	104mm (4.1") H x 130mm (5.1") W x 152mm (6") D
Weight	2.3kg (5 lbs)
RoHS Compliant	Yes
Control Technology	AccuDrive™
Tip-to-Ground Resistance	2 Ohms or less
Meets or Exceeds ANSI/J-STD-001	Yes
Tested using ANSI/ESD S13.1-2015	Yes. Tested up to 50MHz using S13.1-2015 Method. Meets or Exceeds J-STD-001 and ESD S20.20 Requirements
Meets or Exceeds ANSI/ESD S20.20	Yes
Temperature Accuracy	Meets or Exceeds ANSI/J-STD-001 Requirements
Temperature Range	193-454°C (380-850°F)
Tips	Uses AccuDrive™ Blue Series Tip-Heater Cartridges
Soldering Iron	TD-200 AccuDrive™ Tip-Heater Cartridge Soldering Iron
Tool Stand	Can hold up to 7 tips, comes standard with sponge, stay-moist well and brass wool to clean oxidation from tip
Optional Instant SetBack (ISB) Tool Stand	Optionally available as P/N 6019-0089-P1 or standard as part of ADS200 Stations P/N 8007-0579 or P/N 8007-0581

www.paceworldwide.com/ADS200 | www.facebook.com/paceworldwide | www.youtube.com/paceworldwide

P/N 5400-0149

PACE Worldwide
346 Grant Road
Vass, NC 28394

phone 910.695.7223
toll free 877.882.PACE

PACE Europe Limited
11 Holdom Avenue
Bletchley, Milton Keynes,
Buckinghamshire, MK1 1QU (UK)

phone +44 1908 277666
fax +44 1908 277777

PACE
paceworldwide.com

